

# LAND LIST

FIND YOUR PLACE



**THE LAND GROUP**



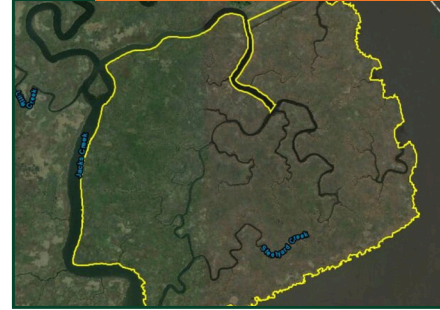
# SHORELINES

The Chesapeake Bay Region offers a vast number of water oriented landscapes from piedmont streams of Western Maryland to the coastal estuarine wetlands along the Eastern Shore, all with dynamic wildlife habitats.



01

Nanticoke Marsh - 600 Acres  
Dorchester County, MD  
\$495,000



02

Toddville Estates - 63 Acres  
Dorchester County, MD  
\$495,000



03

Haines Point Rd - 8 Acres  
Somerset County, MD  
\$169,000



04

Robbins Rd Lodge - 114 Acres  
Dorchester County, MD  
\$525,000



05

Millard Long - 28 Acres  
Somerset County, MD  
\$225,000



06

Nassawango Creek Farm - 232 Acres  
Worcester County, MD  
\$795,000





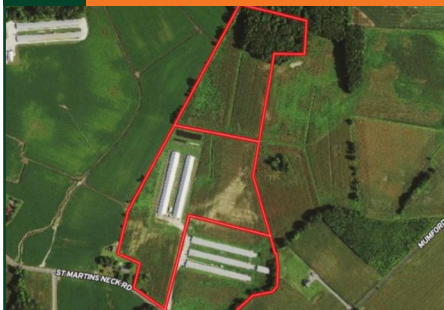
# POULTRY

Income producing poultry operations are available across the Delmarva Peninsula. Maryland ranks tenth in the nation in value of production. Annually the poultry production on the Delmarva exceeds \$3.26 Billion.



01

St. Martins Neck Farm - 54 Acres  
Worcester County, MD  
\$1,500,000



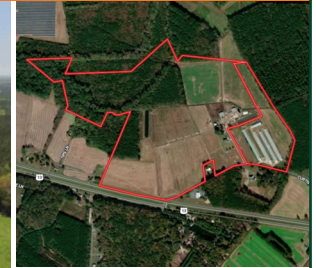
02

Dublin Poultry Farm - 68 Acres  
Somerset County, MD  
\$3,200,000



03

Curtis Chapel Farm - 120 Acres - Four Poultry Houses Growing for Mountaire  
15 Acres Developed with 3,700 SF Home and Four Outbuildings  
Somerset County, MD | \$1,950,000



04

San Domingo Poultry Farm - 107 Acres - Eight Poultry Houses  
10 Year New House Contract with Amick  
Wicomico County, MD | \$4,500,000





# FARMLAND

The Chesapeake Bay Watershed is comprised of approximately 41 million acres. Of this land mass approximately 1.2 million acres are in agriculture. Today more than 87,000 individual farm operations are active in the 5 bay states.

01

Dion Road Farm - 76 Acres  
Caroline County, MD  
\$595,000



02

Lisa Lane Farm - 43 Acres  
Somerset County, MD  
\$230,000



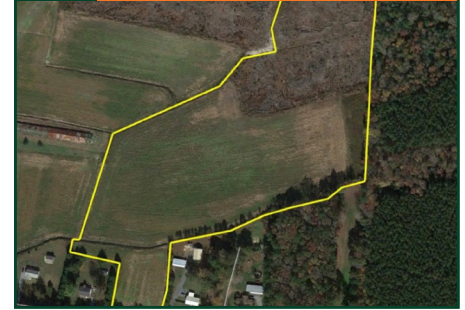
07

Naylor Mill Lot - 8 Acres  
Wicomico County, MD  
\$399,000



08

Nassawango Lot 9 - 16 Acres  
Wicomico County, MD  
\$174,000



03

Possum Hill Rd. - 22 Acres  
Caroline County, MD  
\$250,000



04

Levin Dashiell Lot - 6 Acres  
Wicomico County, MD  
\$67,500



09

Jordan Farm - 176 Acres  
Baltimore County, MD  
\$2,999,000



10

West Road Farm - 41 Acres  
Wicomico County, MD  
\$267,000



05

Plantations Farm - 89 Acres  
Wicomico County, MD  
\$560,000



06

Nassawango Lot 7 - 44 Acres  
Wicomico County, MD  
\$279,000



11

Unionville Rd. Farm - 42 Acres  
Worcester County, MD  
\$225,000



12

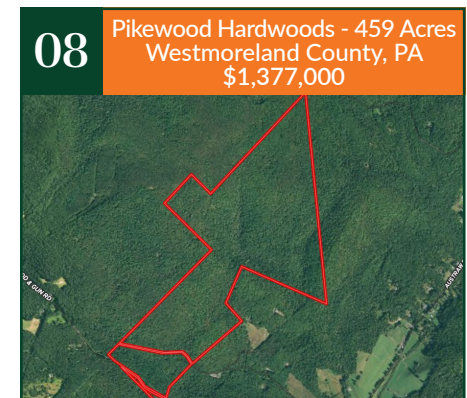
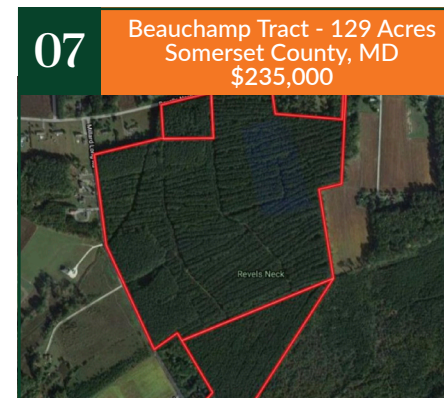
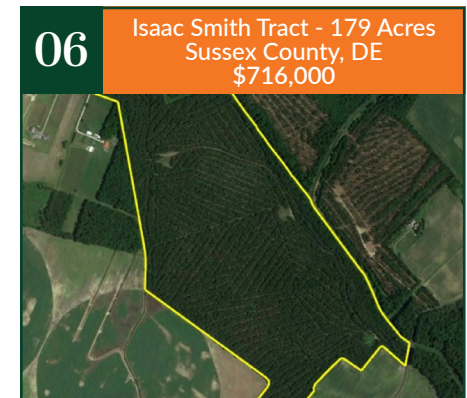
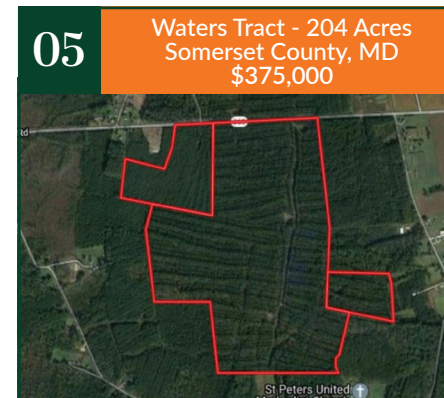
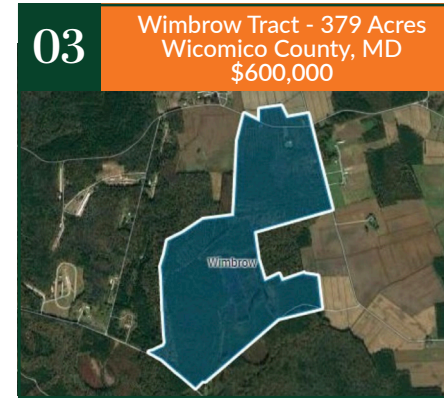
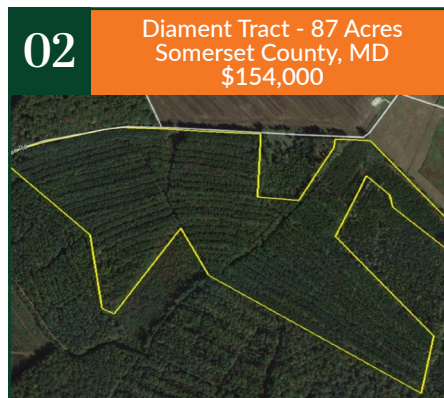
Camp Road Farm - 26 Acres  
Caroline County, MD  
\$469,000





# TIMBERLAND

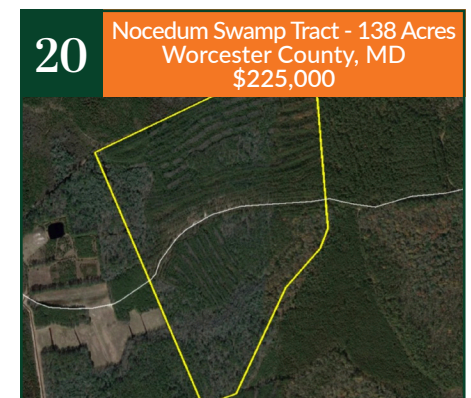
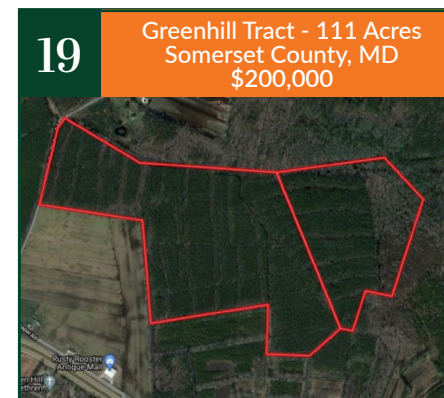
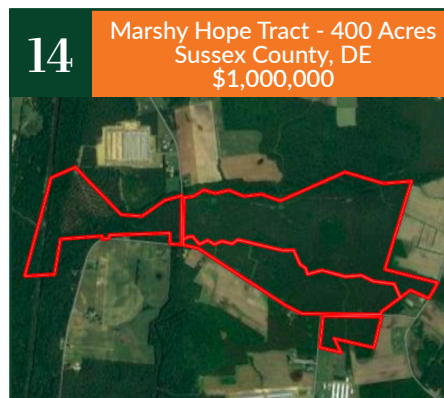
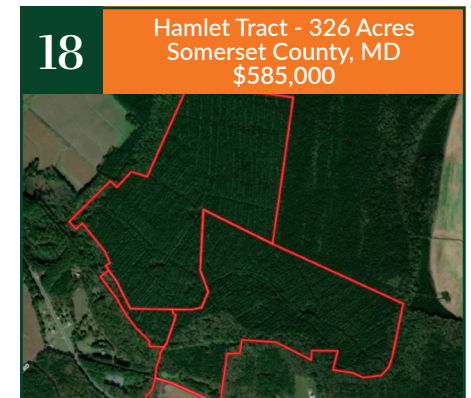
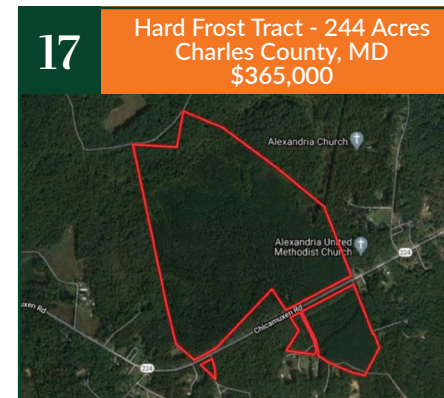
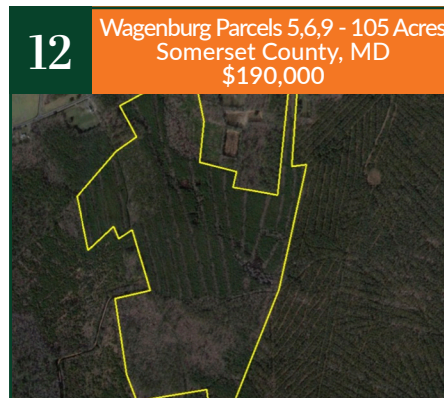
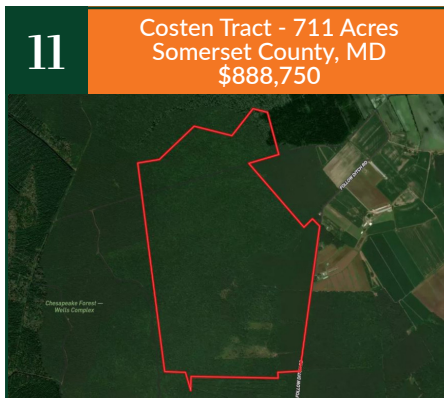
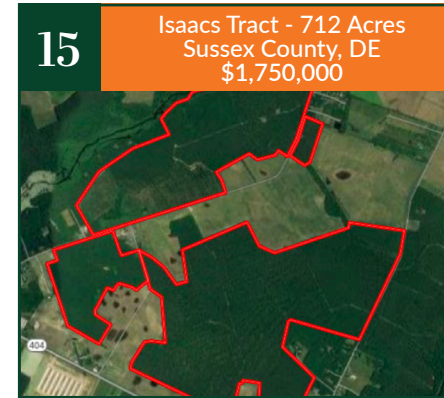
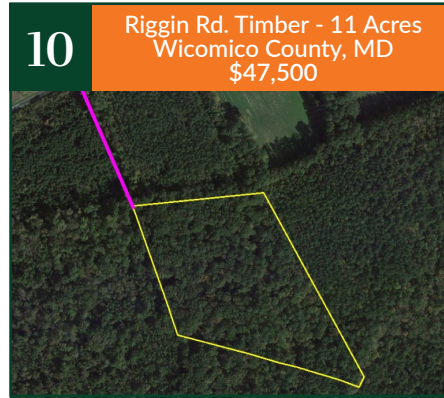
Forestlands throughout the Chesapeake comprise approximately 24 million acres. The high resource value of the timberlands managed throughout historically supported a robust number of mills for all types of wood products.





# TIMBERLAND

Forestlands throughout the Chesapeake comprise approximately 24 million acres. The high resource value of the timberlands managed throughout historically supported a robust number of mills for all types of wood products.





# LUXURY FARMS

These high-end properties have large residences on sprawling acreage with unique amenities including horse barns and other separate structures.



Black Pearl Lodge & Farms  
Dorchester County, MD | \$10,400,000

## 850 ACRE PRIVATE WILDLIFE ESTATE

300 acres of timber, nearly 200 acres of agricultural land, and 350 acres of marshland. Offers 6.5+ miles of waterfront.

## IMPROVED BY THREE RESIDENCES

Newly renovated owners' residence, a large guest house with pool, and the iconic Black Pearl Lodge (featured in Garden & Gun Magazine).

## TURNKEY OPPORTUNITY

Includes farm equipment, decoys, boats, and nearly all furniture and fixtures within the two residences and lodge.

## UNIQUE WATERFOWL HABITAT

Tens of thousands of ducks and geese call Black Pearl their winter home. The unique combination of natural and managed waterfowl and wildlife habitat, insulated by large forest blocks, is unmatched.





# LUXURY FARMS

These high-end properties have large residences on sprawling acreage with unique amenities including horse barns and other separate structures.



Pungoteague Creek Farm  
Accomack County, VA | \$6,500,000

## 1,741 ACRE LAND HOLDING

Four contiguous tax parcels with 160 acres of farmland and 300 acres of estuarine tidal marsh

## 13 MILLION+ BOARD FEET OF TIMBER INVENTORIED

Existing merchantable timber inventory has been professionally managed for four decades

## OVER SIX MILES OF WATERFRONT

Several locations of waterfront along the Pungoteague Creek and Nandua Creek may serve as home sites. A myriad of sandy beaches, timber and agricultural lands make up the shoreline.





# THE CHESAPEAKE BAY REGION'S LAND BROKERAGE



## NETWORK

Largest landowner network in the Chesapeake Region. Since 2015, we have brokered or advised on over 50,000 acres.



## ADVISORY SERVICES

Real Estate Brokerage • Land Valuation •  
Conservation Planning • Land Use Planning •  
Timberland Advisory • GIS Planning & Analysis



## TRACK RECORD OF SUCCESS

Our team of top land professionals has decades of experience in sales, surveying & land use, conservation, forestry, and renewable energy.

VISIT OUR WEBSITE  
TO BEGIN YOUR LAND SEARCH:

[WWW.THELANDGROUP.COM](http://WWW.THELANDGROUP.COM)

**We Sell  
Dirt.®**

# THE LAND GROUP

150 West Market Street, Suite 102 | Salisbury, MD 21801 | 410-934-3478